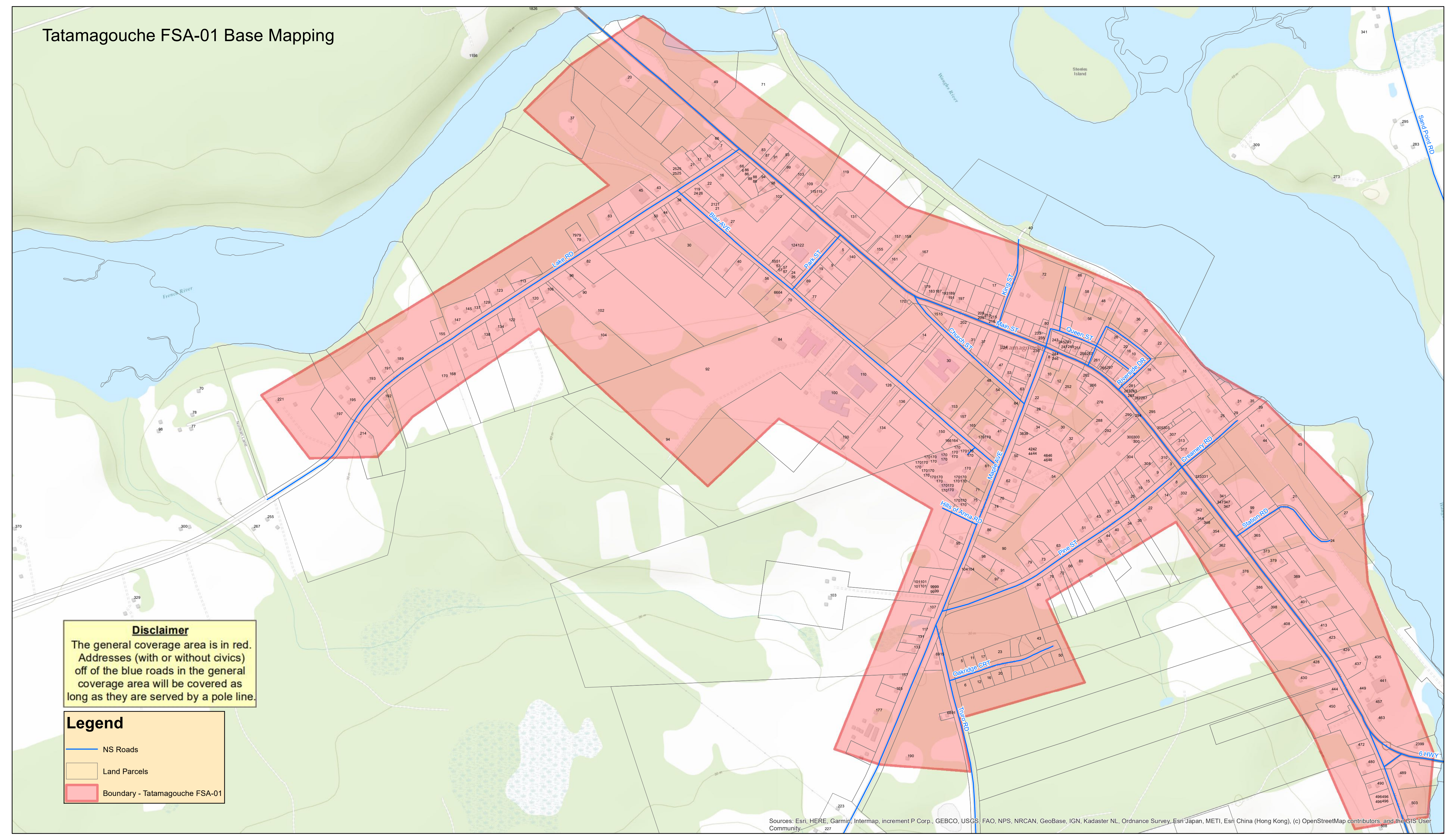
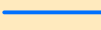




Tatamagouche FSA-01 Base Mapping

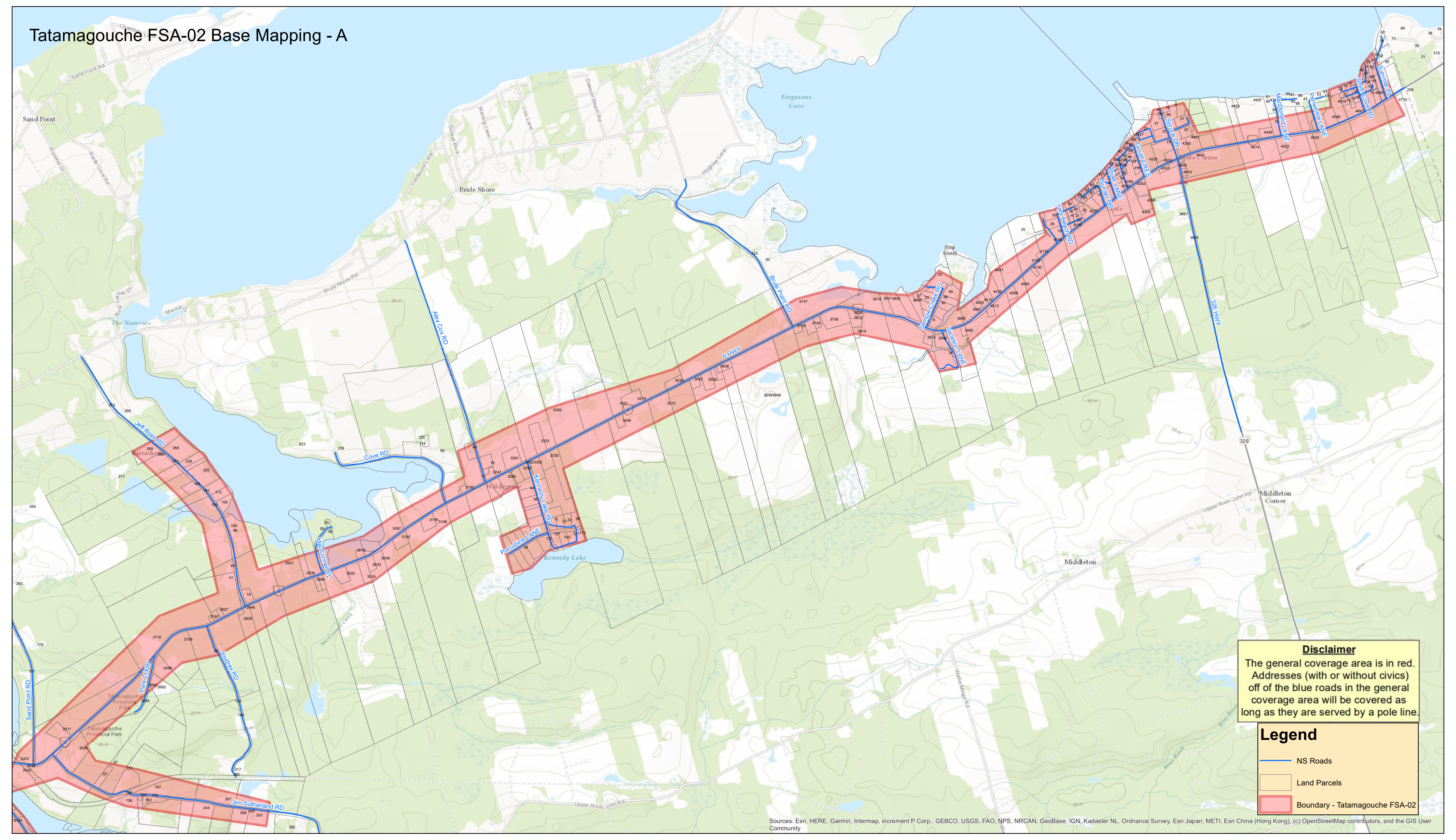


Disclaimer
The general coverage area is in red.
Addresses (with or without civics)
off of the blue roads in the general
coverage area will be covered as
long as they are served by a pole line.

Legend

-  NS Roads
-  Land Parcels
-  Boundary - Tatamagouche FSA-01

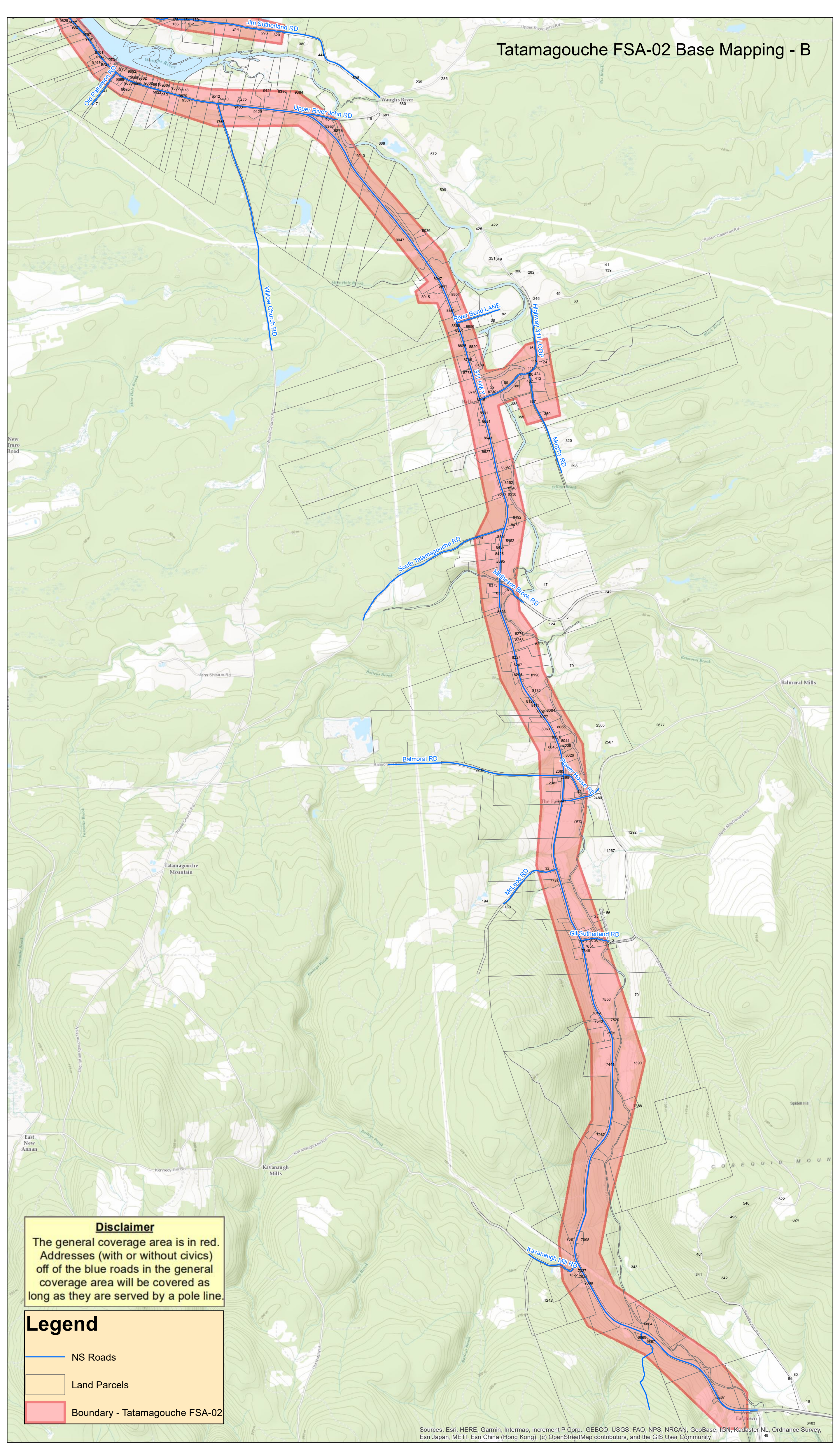
Tatamagouche FSA-02 Base Mapping - A



Disclaimer
 The general coverage area is in red. Addresses (with or without civics) off of the blue roads in the general coverage area will be covered as long as they are served by a pole line.

- Legend**
- NS Roads
 - Land Parcels
 - Boundary - Tatamagouche FSA-02


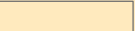

Tatamagouche FSA-02 Base Mapping - B



Disclaimer

The general coverage area is in red. Addresses (with or without civics) off of the blue roads in the general coverage area will be covered as long as they are served by a pole line.

Legend

-  NS Roads
-  Land Parcels
-  Boundary - Tatamagouche FSA-02

Disclaimer

The general coverage area is in red.
Addresses (with or without civics)
off of the blue roads in the general
coverage area will be covered as
long as they are served by a pole line.

Legend

- NS Roads
- Land Parcels
- Boundary - Tatamagouche FSA-03